



## Five Aluminium Boat & Engineering Pte Ltd

No.61, Tuas Ave 1, Singapore 639506

Tel: 6862 8233 Fax: 6861 0733 Email: sales@fiveab.com.sg

Website: www.fiveab.com.sg

GST/Company Reg No: 200810725G

### VIGILANT 20 RIGID HULL WORKBOAT



The VIGILANT 20 Rigid Hull Boat is of a high-speed craft design with specially formulated light weight Foam Fenderings. The boat is constructed with double layer hull with foam filled underfloor to make it virtually unsinkable even when totally flooded. The craft can achieve 35 knots with twin 85hp YAMAHA outboard motors and is extremely comfortable and safe riding even in rough waters.



Specialist Designer & Manufacturer of Aluminum Boats from 4m – 24m  
Authorised Distributor for ISUZU and BETA Marine Engines (10hp to 720hp)  
Marine & Commercial Engineering Design & Fabrication works,  
Marine Outfittings, Class Approved Weldings





# Five Aluminium Boat & Engineering Pte Ltd

No.61, Tuas Ave 1, Singapore 639506

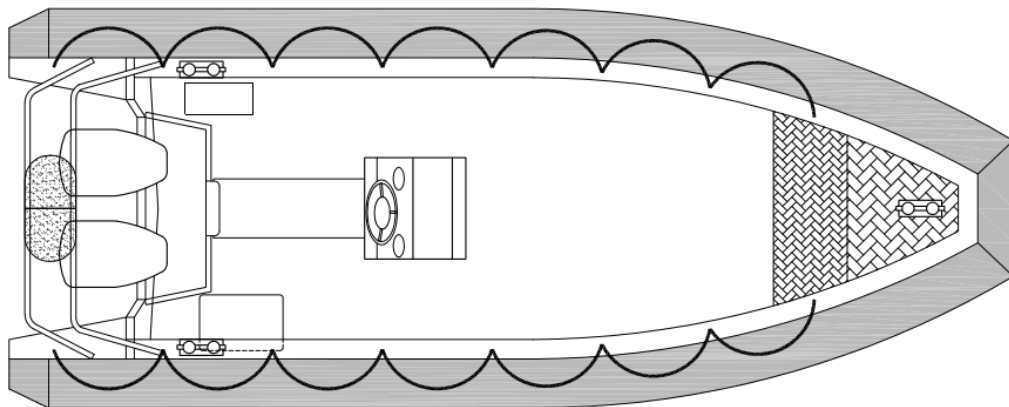
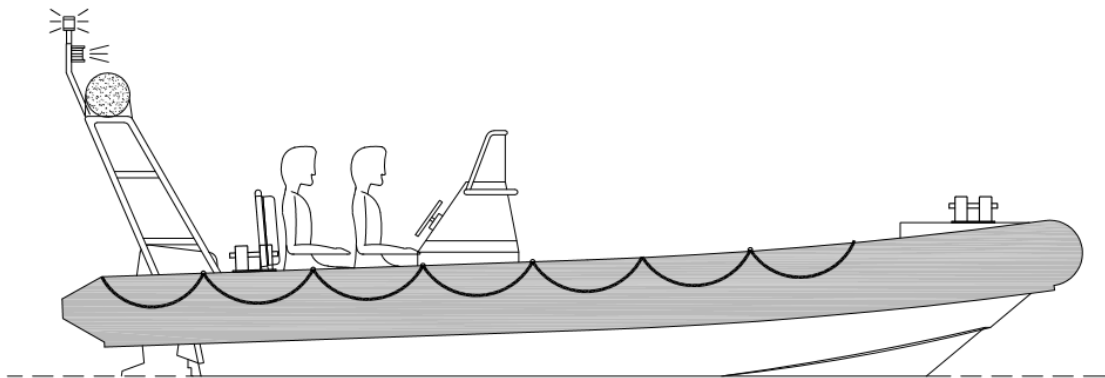
Tel: 6862 8233 Fax: 6861 0733 Email: sales@fiveab.com.sg

Website: www.fiveab.com.sg

GST/Company Reg No: 200810725G

## Principal Dimension

Item	Details
Hull Length	6.0m (20ft)
Beam	2.9m
Draft	Approx. 0.75m
Hull Weight	Approx. 1500kg
Power engine recommended	Twin YAMAHA 85hp 2-stroke Petrol Outboard Motor
Fuel Tank Capacity	200litre Fuel Tank
Material	Marine Grade Aluminium Alloy (5083H321)
Hull bottom thickness	3mm
Tube	PU Foam Collar, Diameter 400mm
Deck	Aluminium Alloy Plate - 3mm



Specialist Designer & Manufacturer of Aluminium Boats from 4m – 24m  
Authorised Distributor for ISUZU and BETA Marine Engines (10hp to 720hp)  
Marine & Commercial Engineering Design & Fabrication works,  
Marine Outfittings, Class Approved Weldings

